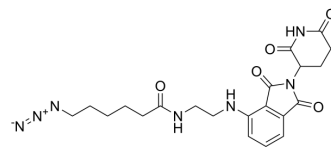


Pomalidomide-C2-amide-C5-azide

Cat. No.:	HY-160235
CAS No.:	2732859-29-7
Molecular Formula:	C ₂₁ H ₂₅ N ₇ O ₅
Molecular Weight:	455.47
Target:	PROTACs
Pathway:	PROTAC
Storage:	Please store the product under the recommended conditions in the Certificate of Analysis.



BIOLOGICAL ACTIVITY

Description

Pomalidomide-C2-amide-C5-azide is a derivative of pomalidomide. Pomalidomide-C2-amide-C5-azide can be used to synthesize an efficient PROTAC molecule targeting CDK9. Pomalidomide-C2-amide-C5-azide enhances antiproliferative activity^[1].

REFERENCES

[1]. Xiaqiu Qiu, et al. Discovery of selective CDK9 degraders with enhancing antiproliferative activity through PROTAC conversion. Eur J Med Chem. 2021.

Caution: Product has not been fully validated for medical applications. For research use only.

Tel: 609-228-6898

Fax: 609-228-5909

E-mail: tech@MedChemExpress.com

Address: 1 Deer Park Dr, Suite Q, Monmouth Junction, NJ 08852, USA