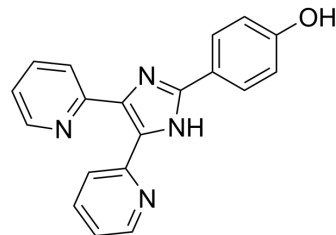


## HPI

Cat. No.:	HY-160240
CAS No.:	210541-64-3
Molecular Formula:	C <sub>19</sub> H <sub>14</sub> N <sub>4</sub> O
Molecular Weight:	314.34
Target:	Others
Pathway:	Others
Storage:	Please store the product under the recommended conditions in the Certificate of Analysis.



## BIOLOGICAL ACTIVITY

### Description

HPI is a HS<sup>-</sup> fluorescent probe (Ex/Em=280/410 nm). HPI can be used to detect the HS<sup>-</sup> form of hydrogen sulfide (H<sub>2</sub>S) gas in environmental water samples<sup>[1]</sup>.

## REFERENCES

[1]. El-Maghrabey MH, et al. Detection of hydrogen sulfide in water samples with 2-(4-hydroxyphenyl)-4,5-di(2-pyridyl)imidazole-copper(II) complex using environmentally green microplate fluorescence assay method. *Anal Chim Acta*. 2019 May 30;1057:123-131.

**Caution: Product has not been fully validated for medical applications. For research use only.**

Tel: 609-228-6898

Fax: 609-228-5909

E-mail: tech@MedChemExpress.com

Address: 1 Deer Park Dr, Suite Q, Monmouth Junction, NJ 08852, USA