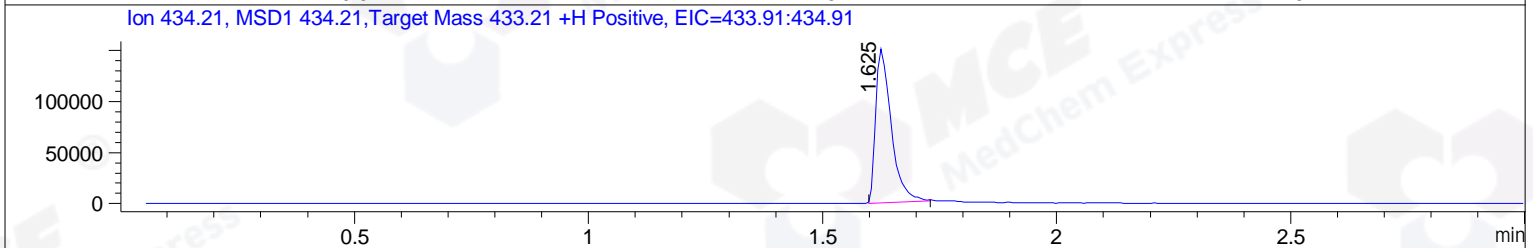
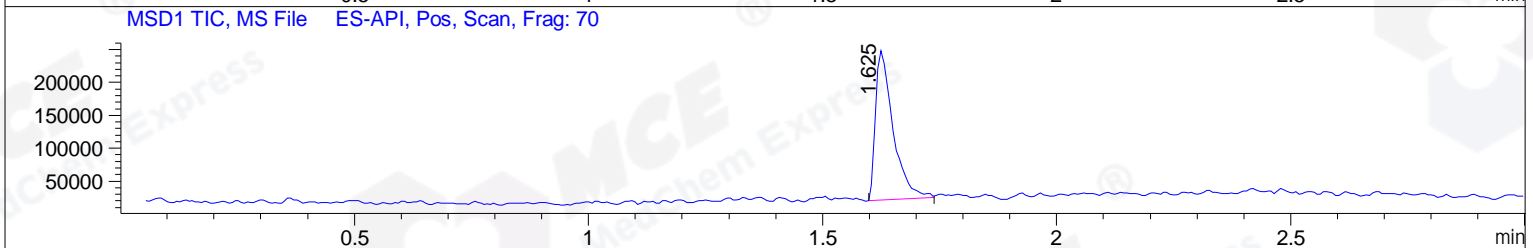
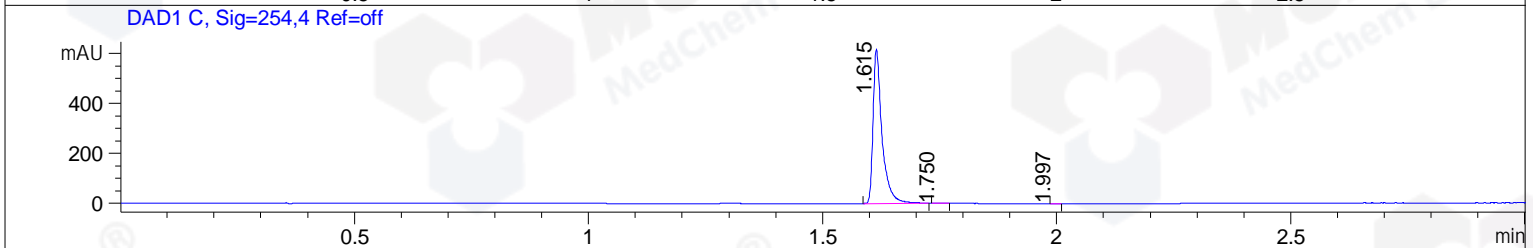
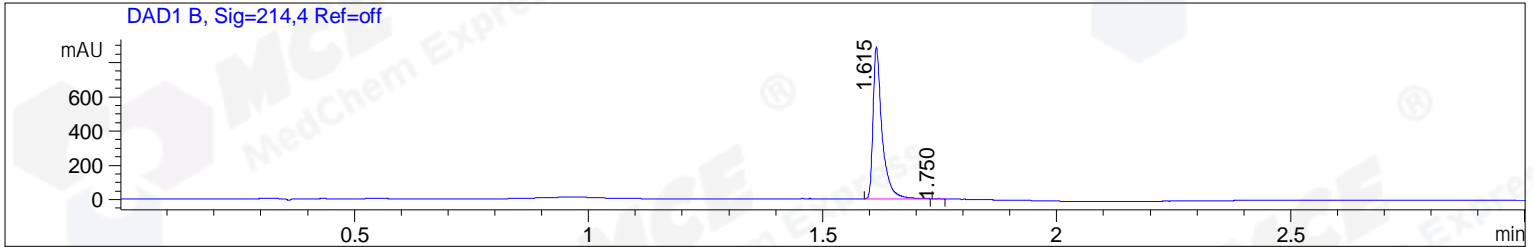


File ..1\DATA\2019\20191015\731\BIZ2019-014-SCH1.D Tgt Mass (CHM):
 Injection Date : 15 Oct 19 11:49 am +0800 Seq. Line : 42
 Sample Name : BIZ2019-014-SCH1 Location : PL-A-04
 Acq. Operator : ZJ_1432 Inj : 1
 Spec. Reported : MS Integration Inj Volume : 1 ul
 Acq. Method : D:\Chem32\1\data\2019\20191015\731\1-POS-3MIN.M
 Analysis Method : D:\CHEM32\1\DATA\2019\20191015\731\1-POS-3MIN.M
 Catalog No : HY-16026 Batch#47064
 Method Info : Mobile Phase: A: water(0.01%TFA) B:ACN(0.01%TFA)
 Gradient: 5% to 95%B within 1.3 min
 Flow Rate :1.8ml/min
 Column :SunFire C18, 4.6*50mm,3.5um A-RP-433
 Oven Temperature : 45



Integration Results for DAD1 B, Sig=214,4 Ref=off

RetTim	Width	Area	Height	Area%	MS (+)
1.62	0.02	1185.12	887.66	99.87	434
1.75	0.02	1.59	1.59	0.13	130

Integration Results for DAD1 C, Sig=254,4 Ref=off

RetTim	Width	Area	Height	Area%	MS (+)
1.62	0.02	818.97	618.16	99.82	434
1.75	0.02	0.96	0.85	0.12	130
2.00	0.02	0.55	0.52	0.07	130

Integration Results for MSD1 TIC, MS File

RetTim	Width	Area	Height	Area%	MS (+)
1.63	0.04	593434.63	227584.66	100.00	434

Ret. Time: 1.63

<<<< POSITIVE SPECTRA >>>>

ES-API Positive

