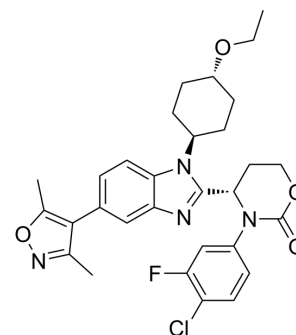


EP300/CBP-IN-1

Cat. No.:	HY-160260
CAS No.:	2638507-71-6
Molecular Formula:	C ₃₀ H ₃₂ ClFN ₄ O ₄
Molecular Weight:	567.05
Target:	Epigenetic Reader Domain; Histone Acetyltransferase
Pathway:	Epigenetics
Storage:	Please store the product under the recommended conditions in the Certificate of Analysis.



BIOLOGICAL ACTIVITY

Description

EP300/CBP-IN-1 (compound 172) is a potent EP300/CBP inhibitor with IC₅₀s of 2.3 nM and 2.1 nM for CBP BRD and EP300 BRD, respectively. EP300/CBP-IN-1 has the inhibitory effect on the proliferation of prostate cancer CWR22RV1 cells^[1].

REFERENCES

[1]. Lei Fan, et al. An EP300/CBP inhibitor. CN112574189A.

Caution: Product has not been fully validated for medical applications. For research use only.

Tel: 609-228-6898

Fax: 609-228-5909

E-mail: tech@MedChemExpress.com

Address: 1 Deer Park Dr, Suite Q, Monmouth Junction, NJ 08852, USA