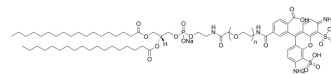


DSPE-CH2-PEG-Fluor 488, MW 2000

Cat. No.:	HY-160271
Target:	Fluorescent Dye
Pathway:	Others
Storage:	Please store the product under the recommended conditions in the Certificate of Analysis.



BIOLOGICAL ACTIVITY

Description

DSPE-CH2-PEG-Fluor 488, MW 2000 is a PEG lipid conjugate with a DSPE group and a Fluor 488 dye. DSPE is a phosphoethanolamine (PE) lipid that can be used in the synthesis of liposomes. And Fluor 488 is a fluorescent dye^[1].

REFERENCES

[1]. McCarley RL. Redox-responsive delivery systems. *Annu Rev Anal Chem* (Palo Alto Calif). 2012;5:391-411.

Caution: Product has not been fully validated for medical applications. For research use only.

Tel: 609-228-6898

Fax: 609-228-5909

E-mail: tech@MedChemExpress.com

Address: 1 Deer Park Dr, Suite Q, Monmouth Junction, NJ 08852, USA