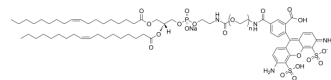


## DOPE-PEG-Fluor 488, MW 2000

Cat. No.:	HY-160272
Target:	Fluorescent Dye
Pathway:	Others
Storage:	Please store the product under the recommended conditions in the Certificate of Analysis.



### BIOLOGICAL ACTIVITY

#### Description

DOPE-PEG-Fluor 488, MW 2000 is a PEG lipid, composed of a DOPE phospholipid and a Fluor 488 fluorophore. DOPE is an unsaturated phospholipid. Fluor 488 has excitation and emission maxima at 499 nm and 520 nm<sup>[1]</sup>.

### REFERENCES

[1]. Che J, et al. DSPE-PEG: a distinctive component in drug delivery system. *Curr Pharm Des.* 2015;21(12):1598-605.

**Caution: Product has not been fully validated for medical applications. For research use only.**

Tel: 609-228-6898

Fax: 609-228-5909

E-mail: [tech@MedChemExpress.com](mailto:tech@MedChemExpress.com)

Address: 1 Deer Park Dr, Suite Q, Monmouth Junction, NJ 08852, USA