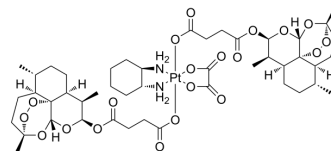


TREM2-IN-1

Cat. No.:	HY-160421
CAS No.:	2000236-36-0
Molecular Formula:	C ₄₆ H ₆₈ N ₂ O ₂₀ Pt
Molecular Weight:	1164.12
Target:	Others
Pathway:	Others
Storage:	Please store the product under the recommended conditions in the Certificate of Analysis.



BIOLOGICAL ACTIVITY

Description	TREM2-IN-1 (OPA) is a TREM2 inhibitor derived from oxaliplatin and artesunate. TREM2-IN-1 is capable of relieving immunosuppressive tumor microenvironment and enhancing chemical anticancer efficiency ^[1] .
IC ₅₀ & Target	TREM2 ^[1]

REFERENCES

[1]. Yang T, et al. Platinum-Based TREM2 Inhibitor Suppresses Tumors by Remodeling the Immunosuppressive Microenvironment. *Angew Chem Int Ed Engl.* 2023 Jan 9;62(2):e202213337.

Caution: Product has not been fully validated for medical applications. For research use only.

Tel: 609-228-6898

Fax: 609-228-5909

E-mail: tech@MedChemExpress.com

Address: 1 Deer Park Dr, Suite Q, Monmouth Junction, NJ 08852, USA