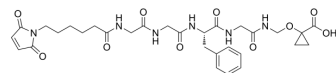


## MC-Gly-Gly-Phe-Gly-NH-CH<sub>2</sub>-O-cyclopropane-CH<sub>2</sub>COOH

Cat. No.:	HY-160453
CAS No.:	2922606-39-9
Molecular Formula:	C <sub>30</sub> H <sub>38</sub> N <sub>6</sub> O <sub>10</sub>
Molecular Weight:	642.66
Target:	Others
Pathway:	Others
Storage:	Please store the product under the recommended conditions in the Certificate of Analysis.



### BIOLOGICAL ACTIVITY

#### Description

MC-Gly-Gly-Phe-Gly-NH-CH<sub>2</sub>-O-cyclopropane-CH<sub>2</sub>COOH is a camptothecin derivative. MC-Gly-Gly-Phe-Gly-NH-CH<sub>2</sub>-O-cyclopropane-CH<sub>2</sub>COOH can be used for antibody drug conjugate (ADC)<sup>[1]</sup>.

### REFERENCES

[1]. 李, et al. Camptothecin derivative for adc preparation. Patent WO2022171115A1.

**Caution: Product has not been fully validated for medical applications. For research use only.**

Tel: 609-228-6898

Fax: 609-228-5909

E-mail: tech@MedChemExpress.com

Address: 1 Deer Park Dr, Suite Q, Monmouth Junction, NJ 08852, USA