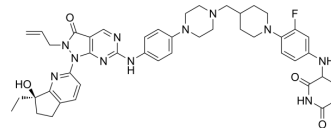


WEE1-IN-6

Cat. No.:	HY-160530
CAS No.:	2928524-08-5
Molecular Formula:	C ₄₅ H ₅₂ N ₁₁ O ₄
Molecular Weight:	829.96
Target:	Wee1
Pathway:	Cell Cycle/DNA Damage
Storage:	Please store the product under the recommended conditions in the Certificate of Analysis.



BIOLOGICAL ACTIVITY

Description	WEE1-IN-6 (compound 110) is a orally active WEE1 inhibitor with an DC ₅₀ value of \approx 100 nM. WEE1-IN-6 inhibits cell proliferation ^[1] .
IC ₅₀ & Target	DC ₅₀ : \approx 100 nM (WEE1) ^[1]
In Vitro	WEE1-IN-6 (compound 110) shows anti-proliferation activity with an IC ₅₀ value of \approx 25 nM in H1048 cells ^[1] . MCE has not independently confirmed the accuracy of these methods. They are for reference only.

REFERENCES

[1]. Fu Liqiang, et al. Wee1 protein kinase degradation agent and use thereof. WO2023083194A1.

Caution: Product has not been fully validated for medical applications. For research use only.

Tel: 609-228-6898

Fax: 609-228-5909

E-mail: tech@MedChemExpress.com

Address: 1 Deer Park Dr, Suite Q, Monmouth Junction, NJ 08852, USA