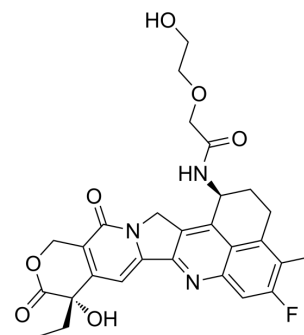


Exatecan-amide-CH₂-O-CH₂-CH₂-OH

Cat. No.:	HY-160543
CAS No.:	2920907-39-5
Molecular Formula:	C ₂₈ H ₂₈ FN ₃ O ₇
Molecular Weight:	537.54
Target:	ADC Cytotoxin; Topoisomerase
Pathway:	Antibody-drug Conjugate/ADC Related; Cell Cycle/DNA Damage
Storage:	Please store the product under the recommended conditions in the Certificate of Analysis.



BIOLOGICAL ACTIVITY

Description	Exatecan-amide-CH ₂ -O-CH ₂ -CH ₂ -OH (Compound 4) is a derivative of Exatecan (HY-13631). Exatecan-amide-CH ₂ -O-CH ₂ -CH ₂ -OH can be used for the research of cell proliferative diseases such as cancer ^[1] .
IC ₅₀ & Target	Camptothecins

REFERENCES

[1]. Pan FJ, et al. Camptothecin derivatives and uses thereof. CN115850291A. 2023-03-28.

Caution: Product has not been fully validated for medical applications. For research use only.

Tel: 609-228-6898

Fax: 609-228-5909

E-mail: tech@MedChemExpress.com

Address: 1 Deer Park Dr, Suite Q, Monmouth Junction, NJ 08852, USA