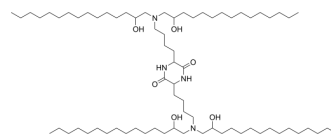


cKK-E15

Cat. No.:	HY-160573
CAS No.:	1432494-71-7
Molecular Formula:	C ₇₂ H ₁₄₄ N ₄ O ₆
Molecular Weight:	1161.94
Target:	Liposome
Pathway:	Metabolic Enzyme/Protease
Storage:	Please store the product under the recommended conditions in the Certificate of Analysis.



BIOLOGICAL ACTIVITY

Description	cKK-E15 is a peptide-lipid that can be used to formulate LNP3 with C14PEG2000, unmodified cholesterol, and DOPE ^[1] .
In Vitro	cKK-E15 is the most enriched in Kupffer cells, Endothelial cells, and hepatocytes ^[1] . MCE has not independently confirmed the accuracy of these methods. They are for reference only.

REFERENCES

[1]. Lokugamage MP, et, al. Mild Innate Immune Activation Overrides Efficient Nanoparticle-Mediated RNA Delivery. Adv Mater. 2020 Jan;32(1):e1904905.

Caution: Product has not been fully validated for medical applications. For research use only.

Tel: 609-228-6898

Fax: 609-228-5909

E-mail: tech@MedChemExpress.com

Address: 1 Deer Park Dr, Suite Q, Monmouth Junction, NJ 08852, USA