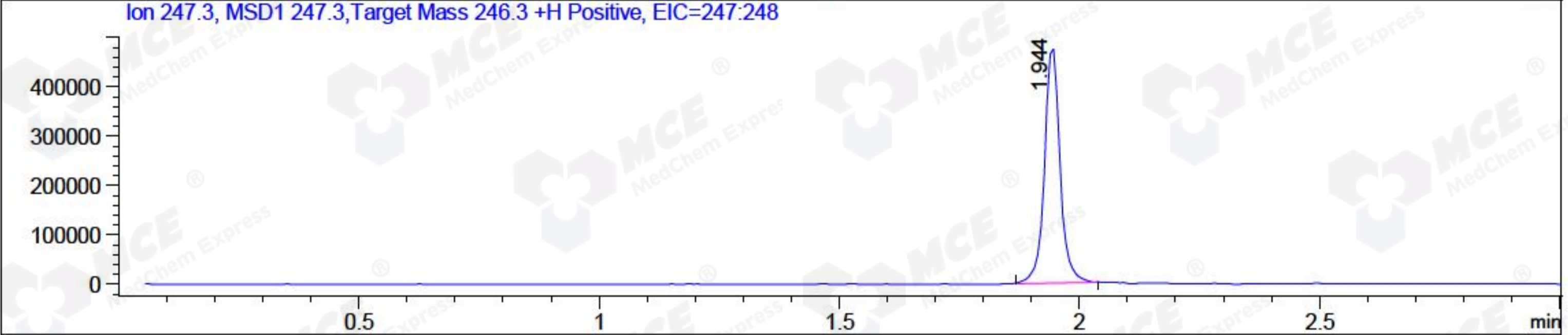
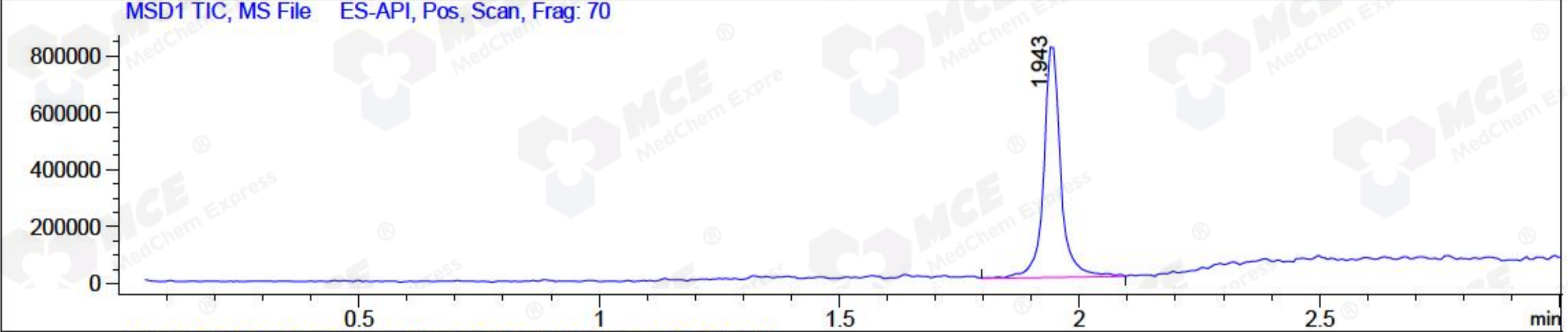
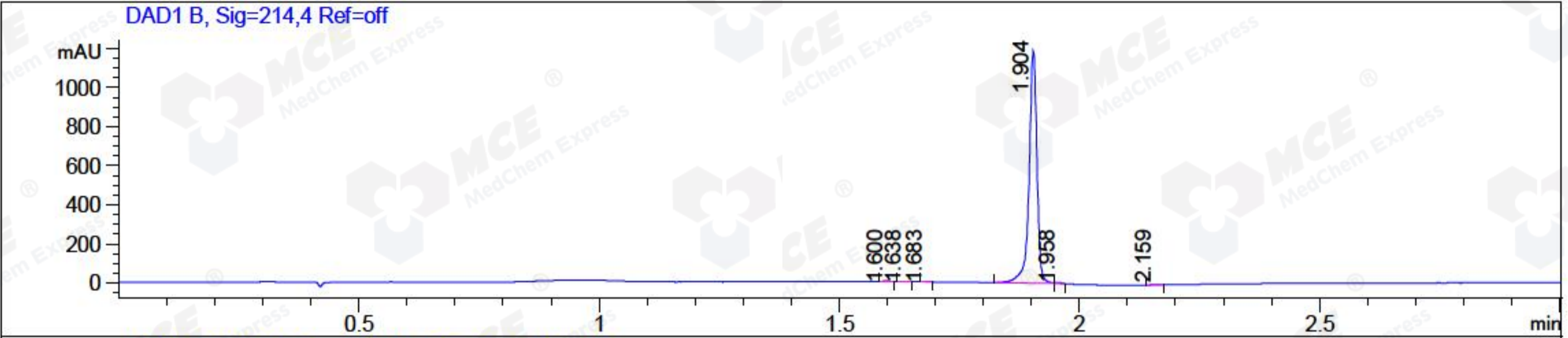


File ..\DATA\2018\20180822\348\CPK2018-822-14510.D Tgt Mass (CHM):  
 Injection Date : 22 Aug 18 6:36 pm +0800 Seq. Line : 22  
 Sample Name : CPK2018-822-14510 Location : P2-D-09  
 Acq. Operator : LQ\_1052 Inj : 1  
 Spec. Reported : MS Integration Inj Volume : 1 ul  
 Acq. Method : D:\Chem32\1\data\2018\20180822\348\1-POS-3MIN-1.M  
 Analysis Method : D:\CHEM32\1\DATA\2018\20180822\348\1-POS-3MIN-1.M  
 Catalog No : HY-16059 Batch#14510 A-RP-314  
 Method Info : Mobile Phase: A: water(0.01%TFA) B:ACN(0.01%TFA)  
 Gradient: 5% to 95%B within 1.3 min  
 Flow Rate :1.8ml/min  
 Column :SunFire C18, 4.6\*50mm,3.5um A-RP-314  
 Oven Temperature : 45□



Integration Results for DAD1 B, Sig=214,4 Ref=off

| RetTim | Width | Area    | Height  | Area% | MS (+) |
|--------|-------|---------|---------|-------|--------|
| 1.60   | 0.02  | 2.18    | 2.09    | 0.16  | 141    |
| 1.64   | 0.02  | 1.40    | 1.51    | 0.10  | 141    |
| 1.68   | 0.02  | 1.41    | 1.45    | 0.10  | 141    |
| 1.90   | 0.02  | 1353.74 | 1184.89 | 99.17 | 247    |
| 1.96   | 0.02  | 4.17    | 4.22    | 0.31  | 247    |
| 2.16   | 0.02  | 2.13    | 2.17    | 0.16  | 141    |

Integration Results for MSD1 TIC, MS File

| RetTim | Width | Area       | Height    | Area%  | MS (+) |
|--------|-------|------------|-----------|--------|--------|
| 1.94   | 0.04  | 2013221.50 | 828236.75 | 100.00 | 247    |

Ret. Time: 1.94

<<<< POSITIVE SPECTRA >>>>

ES-API Positive

