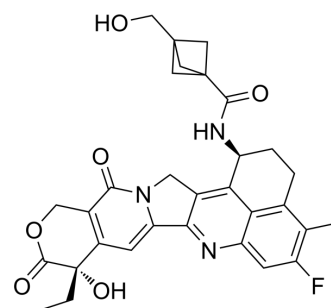


## Exatecan-amide-bicyclo[1.1.1]pentan-1-ylmethanol

Cat. No.:	HY-160598
CAS No.:	2891774-71-1
Molecular Formula:	C <sub>31</sub> H <sub>30</sub> FN <sub>3</sub> O <sub>6</sub>
Molecular Weight:	559.58
Target:	ADC Cytotoxin; Topoisomerase
Pathway:	Antibody-drug Conjugate/ADC Related; Cell Cycle/DNA Damage
Storage:	Please store the product under the recommended conditions in the Certificate of Analysis.



### BIOLOGICAL ACTIVITY

Description	Exatecan-amide-bicyclo[1.1.1]pentan-1-ylmethanol (compound 45) is a camptothecin compound that can inhibit cell proliferation, with an IC <sub>50</sub> of 2.92 ng/mL for MDA-MB-468 cells. Exatecan-amide-bicyclo[1.1.1]pentan-1-ylmethanol can be used for the research of cancer <sup>[1]</sup> .
IC <sub>50</sub> & Target	Camptothecins
In Vitro	Exatecan-amide-bicyclo[1.1.1]pentan-1-ylmethanol (compound 45) inhibits MDA-MB-468 cell proliferation, with an IC <sub>50</sub> of 2.92 ng/mL <sup>[1]</sup> . MCE has not independently confirmed the accuracy of these methods. They are for reference only.

### REFERENCES

[1]. QD Wen, et, al. Novel camptothecin compound and preparation method and application thereof. CN115557962A.

**Caution: Product has not been fully validated for medical applications. For research use only.**

Tel: 609-228-6898

Fax: 609-228-5909

E-mail: tech@MedChemExpress.com

Address: 1 Deer Park Dr, Suite Q, Monmouth Junction, NJ 08852, USA