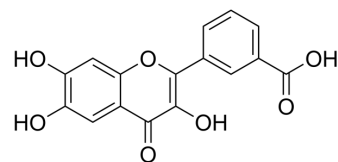


## IP6K2-IN-1

Cat. No.:	HY-161032
CAS No.:	2926679-10-7
Molecular Formula:	C <sub>16</sub> H <sub>10</sub> O <sub>7</sub>
Molecular Weight:	314.25
Target:	Others
Pathway:	Others
Storage:	Please store the product under the recommended conditions in the Certificate of Analysis.



## BIOLOGICAL ACTIVITY

### Description

IP6K2-IN-1 (Compd 20s) is a selective IP6K2 inhibitor, with an IC<sub>50</sub> value of 0.55 μM<sup>[1]</sup>.

## REFERENCES

[1]. Myunghwan Ahn, et al. Synthesis and biological evaluation of flavonoid-based IP6K2 inhibitors. J Enzyme Inhib Med Chem. 2023 Dec;38(1):2193866.

**Caution: Product has not been fully validated for medical applications. For research use only.**

Tel: 609-228-6898

Fax: 609-228-5909

E-mail: tech@MedChemExpress.com

Address: 1 Deer Park Dr, Suite Q, Monmouth Junction, NJ 08852, USA