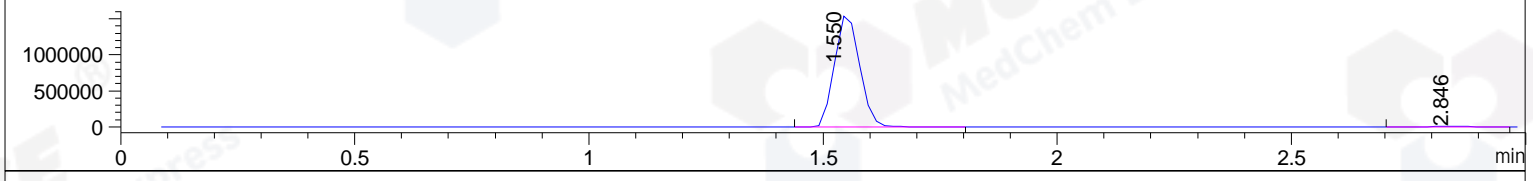
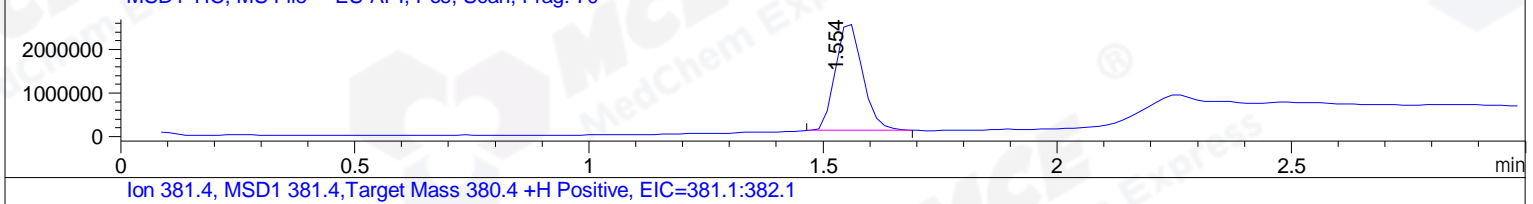
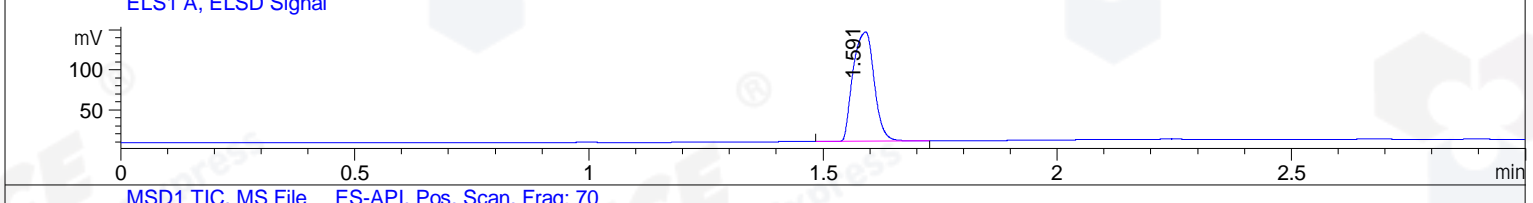
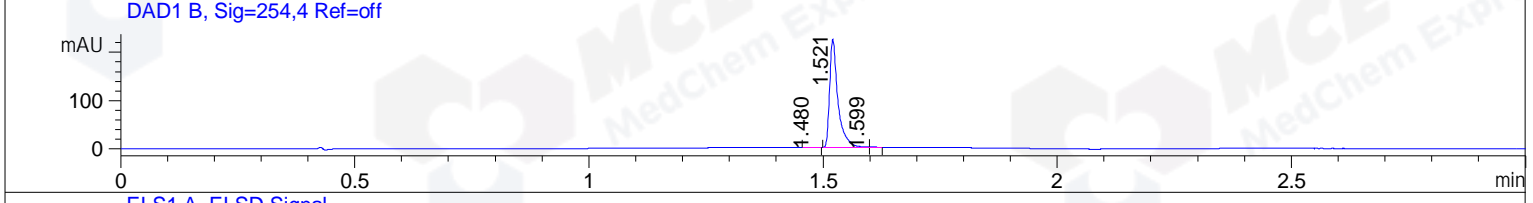
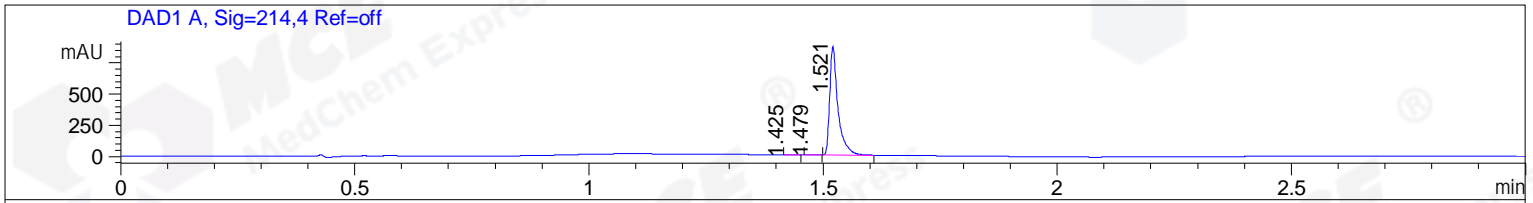


File ..ata\20171201\20171201-2\CPK2017-N30-08329.D Tgt Mass (CHM):
 Injection Date : 1 Dec 17 12:29 pm +0800 Seq. Line : 15
 Sample Name : CPK2017-N30-08329 Location : P2-B-01
 Acq. Operator : ZLJ_587 Inj : 1
 Spec. Reported : MS Integration Inj Volume : 1 ul
 Acq. Method : D:\LCMS03\Data\20171201\20171201-2\1-POS-3MIN.M
 Analysis Method : D:\LCMS03\Data\20171201\20171201-2\1-POS-3MIN.M
 Catalog No: HY-16106 Batch#08329
 Method Info : Mobile Phase: A: water(0.01%TFA) B:ACN(0.01%TFA)
 Gradient: 5% to 95%B within 1.3 min
 Flow Rate :1.8ml/min
 Column :SunFire C18, 4.6*50mm,3.5um A-RP-186
 Oven Temperature : 45C



Integration Results for DAD1 A, Sig=214,4 Ref=off

RetTim	Width	Area	Height	Area%	MS (+)
1.43	0.02	0.47	0.37	0.04	413
1.48	0.01	1.33	1.36	0.12	413
1.52	0.02	1070.33	868.65	99.83	381

Integration Results for DAD1 B, Sig=254,4 Ref=off

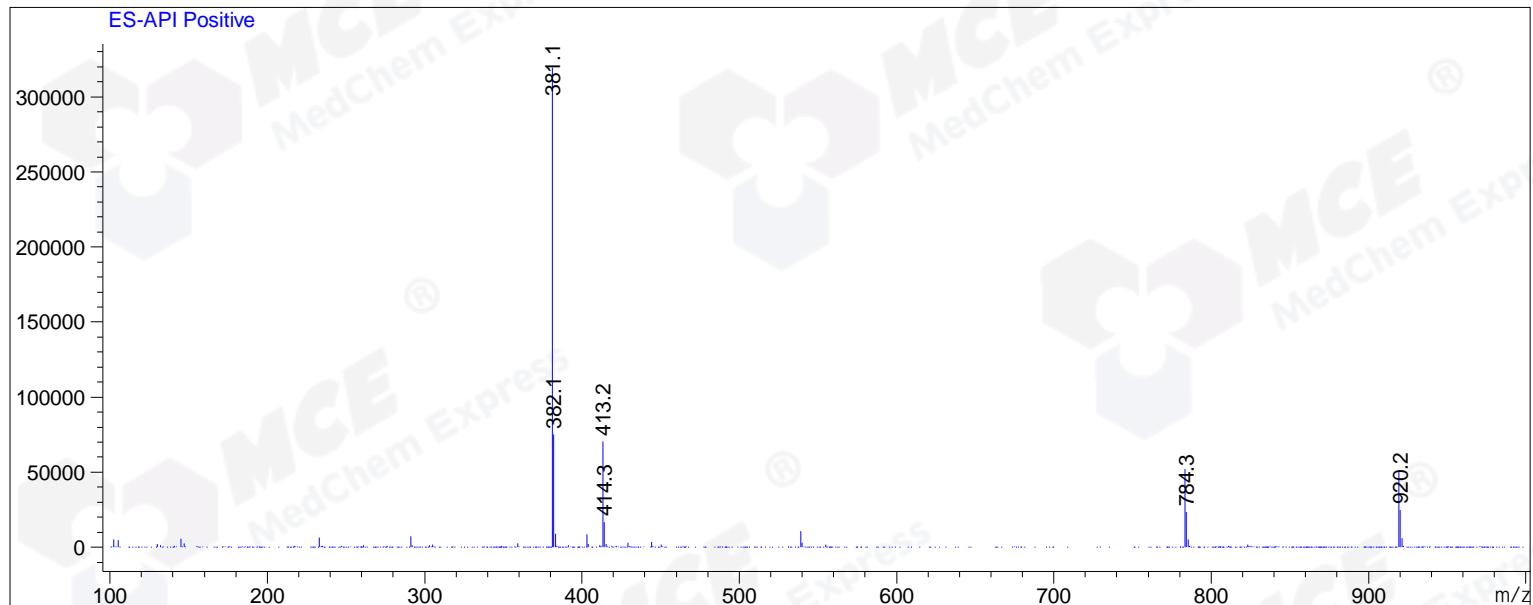
RetTim	Width	Area	Height	Area%	MS (+)
1.48	0.02	0.42	0.39	0.15	413
1.52	0.02	276.62	223.88	99.58	381
1.60	0.02	0.74	0.78	0.27	381

Integration Results for MSD1 TIC, MS File

RetTim	Width	Area	Height	Area%	MS (+)
1.55	0.07	9970213.00	2543066.75	100.00	381

Ret. Time: 1.55

<<<< POSITIVE SPECTRA >>>>



*** End of Report ***