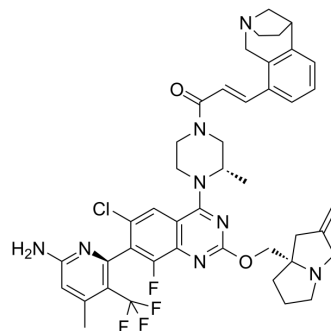


## KRAS G13D-IN-1

Cat. No.:	HY-161066
Molecular Formula:	C <sub>43</sub> H <sub>45</sub> ClF <sub>4</sub> N <sub>8</sub> O <sub>2</sub>
Molecular Weight:	817.32
Target:	Ras
Pathway:	GPCR/G Protein; MAPK/ERK Pathway
Storage:	Please store the product under the recommended conditions in the Certificate of Analysis.



### BIOLOGICAL ACTIVITY

<b>Description</b>	KRAS G13D-IN-1 (compound 41) is a selective and covalently reversible inhibitor of KRAS <sup>G13D</sup> (IC <sub>50</sub> : 0.41 nM). The selectivity for KRAS <sup>G13D</sup> is 29-fold against KRAS wild type. KRAS G13D-IN-1 is an inhibitor of the GDP state and targets the SWII binding pocket of KRAS <sup>G13D</sup> . KRAS G13D-IN-1 inhibits KRAS binding to GDP and turns on/off downstream signaling cascades <sup>[1]</sup> .
--------------------	---

<b>IC<sub>50</sub> &amp; Target</b>	IC <sub>50</sub> : 0.41 nM (KRAS <sup>G13D</sup> ) <sup>[1]</sup>
-------------------------------------	---

### REFERENCES

[1]. Nilewski C, et al. Structure-Based Design and Evaluation of Reversible KRAS G13D Inhibitors. ACS Med Chem Lett. 2023 Dec 6;15(1):21-28.

**Caution: Product has not been fully validated for medical applications. For research use only.**

Tel: 609-228-6898

Fax: 609-228-5909

E-mail: tech@MedChemExpress.com

Address: 1 Deer Park Dr, Suite Q, Monmouth Junction, NJ 08852, USA