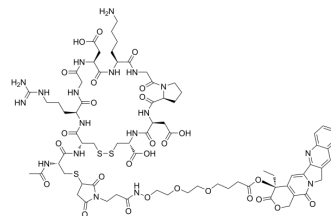


iRGD-CPT

Cat. No.:	HY-161095
Molecular Formula:	$C_{75}H_{100}N_{18}O_{27}S_3$
Molecular Weight:	1781.9
Target:	Others
Pathway:	Others
Storage:	Please store the product under the recommended conditions in the Certificate of Analysis.



BIOLOGICAL ACTIVITY

Description

iRGD-CPT is a conjugate of iRGD and camptothecin that is covalently coupled through a heterobifunctional linker. iRGD-CPT has anticancer activity in vitro and in vivo. iRGD-CPT can be used for the study of colon cancer^[1].

REFERENCES

[1]. Singh, Tejinder et al. Tumor-homing peptide iRGD-conjugate enhances tumor accumulation of camptothecin for colon cancer therapy. *European journal of medicinal chemistry*, vol. 265 116050. 16 Dec. 2023

Caution: Product has not been fully validated for medical applications. For research use only.

Tel: 609-228-6898

Fax: 609-228-5909

E-mail: tech@MedChemExpress.com

Address: 1 Deer Park Dr, Suite Q, Monmouth Junction, NJ 08852, USA