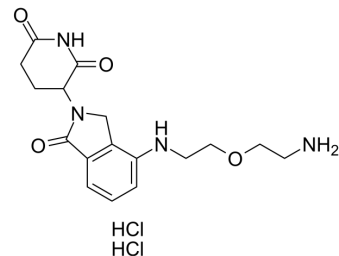


Lenalidomide 4'-PEG1-amine dihydrochloride

Cat. No.:	HY-161128
CAS No.:	2624336-86-1
Molecular Formula:	C ₁₇ H ₂₄ Cl ₂ N ₄ O ₄
Molecular Weight:	419.3
Target:	Ligands for E3 Ligase
Pathway:	PROTAC
Storage:	Please store the product under the recommended conditions in the Certificate of Analysis.



BIOLOGICAL ACTIVITY

Description

Lenalidomide 4'-PEG1-amine dihydrochloride is the Lenalidomide-based Cereblon ligand used in the recruitment of CRBN protein. Lenalidomide 4'-PEG1-amine dihydrochloride can be connected to the ligand for protein by a linker to form PROTAC [1].

REFERENCES

[1]. Wang S, et al. Monofunctional intermediates for ligand-dependent target protein degradation. China, WO2017176958A1. 2017-10-12.

Caution: Product has not been fully validated for medical applications. For research use only.

Tel: 609-228-6898

Fax: 609-228-5909

E-mail: tech@MedChemExpress.com

Address: 1 Deer Park Dr, Suite Q, Monmouth Junction, NJ 08852, USA