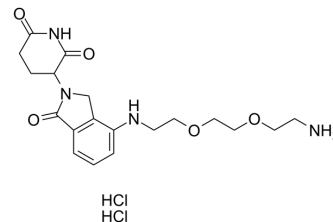


Lenalidomide 4'-PEG2-amine dihydrochloride

| | |
|--------------------|---|
| Cat. No.: | HY-161129 |
| CAS No.: | 2624336-88-3 |
| Molecular Formula: | C ₁₉ H ₂₈ Cl ₂ N ₄ O ₅ |
| Molecular Weight: | 463.36 |
| Target: | Ligands for E3 Ligase |
| Pathway: | PROTAC |
| Storage: | Please store the product under the recommended conditions in the Certificate of Analysis. |



BIOLOGICAL ACTIVITY

Description

Lenalidomide 4'-PEG2-amine dihydrochloride is the Lenalidomide-based Cereblon ligand used in the recruitment of CRBN protein. Lenalidomide 4'-PEG2-amine dihydrochloride can be connected to the ligand for protein by a linker to form PROTAC [1].

REFERENCES

[1]. Wang S, et al. Monofunctional intermediates for ligand-dependent target protein degradation. China, WO2017176958A1. 2017-10-12.

Caution: Product has not been fully validated for medical applications. For research use only.

Tel: 609-228-6898

Fax: 609-228-5909

E-mail: tech@MedChemExpress.com

Address: 1 Deer Park Dr, Suite Q, Monmouth Junction, NJ 08852, USA