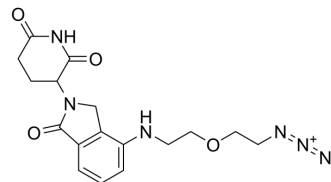


## Lenalidomide 4'-PEG1-azide

Cat. No.:	HY-161133
CAS No.:	2399455-45-7
Molecular Formula:	C <sub>17</sub> H <sub>20</sub> N <sub>6</sub> O <sub>4</sub>
Molecular Weight:	372.38
Target:	E3 Ligase Ligand-Linker Conjugates
Pathway:	PROTAC
Storage:	Please store the product under the recommended conditions in the Certificate of Analysis.



### BIOLOGICAL ACTIVITY

#### Description

Lenalidomide 4'-PEG1-azide (Compound 4g) is a lenalidomide-derived azide. Lenalidomide 4'-PEG1-azide incorporates the Lenalidomide based cereblon ligand and a linker. Lenalidomide 4'-PEG1-azide is a click chemistry reagent, it contains an Azide group and can undergo copper-catalyzed azide-alkyne cycloaddition (CuAAC) with molecules containing Alkyne groups. Strain-promoted alkyne-azide cycloaddition (SPAAC) can also occur with molecules containing DBCO or BCN groups.<sup>[1]</sup>

### REFERENCES

[1]. Liu H, et al. Construction of an IMiD-based azide library as a kit for PROTAC research. *Org Biomol Chem*. 2021 Jan 6;19(1):166-170.

**Caution: Product has not been fully validated for medical applications. For research use only.**

Tel: 609-228-6898

Fax: 609-228-5909

E-mail: tech@MedChemExpress.com

Address: 1 Deer Park Dr, Suite Q, Monmouth Junction, NJ 08852, USA