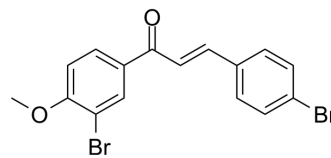


Carbonic anhydrase/AChE-IN-1

Cat. No.:	HY-161142
Molecular Formula:	C ₁₆ H ₁₂ Br ₂ O ₂
Molecular Weight:	396.07
Target:	Carbonic Anhydrase; Cholinesterase (ChE)
Pathway:	Metabolic Enzyme/Protease; Neuronal Signaling
Storage:	Please store the product under the recommended conditions in the Certificate of Analysis.



BIOLOGICAL ACTIVITY

Description	Carbonic anhydrase/AChE-IN-1 (compound 16) is a carbonic anhydrase and AChE inhibitor with K _i s of 24.42 nM, 19.95 nM, and 5.07 nM for hCA I, hCA II, and AChE, respectively ^[1] .		
IC ₅₀ & Target	hCA I 24.42 nM (Ki)	hCA II 19.95 nM (Ki)	AChE 5.07 nM (Ki)

REFERENCES

[1]. Busra Ozturk Aydin, et al. Organohalogen chalcones: design, synthesis, ADMET prediction, molecular dynamics study and inhibition effect on acetylcholinesterase and carbonic anhydrase. Mol Divers. 2024 Jan 3.

Caution: Product has not been fully validated for medical applications. For research use only.

Tel: 609-228-6898

Fax: 609-228-5909

E-mail: tech@MedChemExpress.com

Address: 1 Deer Park Dr, Suite Q, Monmouth Junction, NJ 08852, USA