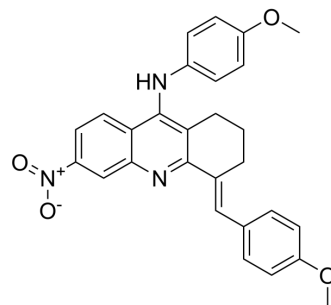


AChE/BChE-IN-17

Cat. No.:	HY-161150
Molecular Formula:	C ₂₈ H ₂₅ N ₃ O ₄
Molecular Weight:	467.52
Target:	Cholinesterase (ChE); Glucosidase
Pathway:	Neuronal Signaling; Metabolic Enzyme/Protease
Storage:	Please store the product under the recommended conditions in the Certificate of Analysis.



BIOLOGICAL ACTIVITY

Description	AChE/BChE-IN-17 (compound 8m) is a potent and non-competitive AChE and BChE inhibitor, with IC ₅₀ values of 125.06 nM and 119.68 nM, respectively. AChE/BChE-IN-17 also inhibits α-glucosidase, with an IC ₅₀ of 41050 nM ^[1] .	
IC ₅₀ & Target	AChE 125.06 ± 2 nM (IC ₅₀)	BChE 119.68 ± 2 nM (IC ₅₀)

REFERENCES

[1]. Shirisha T, et al. Metal-free synthesis of functionalized tacrine derivatives and their evaluation for acetyl/butrylcholinesterase and α-glucosidase inhibition. Org Biomol Chem. 2024 Jan 3.

Caution: Product has not been fully validated for medical applications. For research use only.

Tel: 609-228-6898

Fax: 609-228-5909

E-mail: tech@MedChemExpress.com

Address: 1 Deer Park Dr, Suite Q, Monmouth Junction, NJ 08852, USA