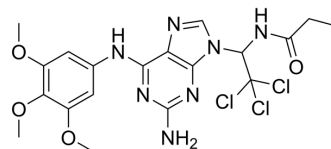


CDC20-IN-1

Cat. No.:	HY-161257
Molecular Formula:	C ₁₉ H ₂₂ Cl ₃ N ₇ O ₄
Molecular Weight:	518.78
Target:	Autophagy
Pathway:	Autophagy
Storage:	Please store the product under the recommended conditions in the Certificate of Analysis.



BIOLOGICAL ACTIVITY

Description

CDC20-IN-1 (Compound E1) is a specific inhibitor of CDC20 and can be used in triple-negative breast cancer research. CDC20-IN-1 can induce autophagy in cancer cells and inhibit MDA-MB-231 cell proliferation, with an IC₅₀ value of 1.43 μM^[1].

REFERENCES

[1]. Zhao SF, et al. Design, synthesis and biological evaluation of CDC20 inhibitors for treatment of triple-negative breast cancer. *Eur J Med Chem.* 2024 Feb 8;268:116204.

Caution: Product has not been fully validated for medical applications. For research use only.

Tel: 609-228-6898

Fax: 609-228-5909

E-mail: tech@MedChemExpress.com

Address: 1 Deer Park Dr, Suite Q, Monmouth Junction, NJ 08852, USA