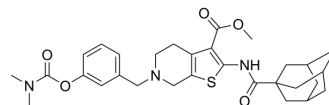


AChE/BChE-IN-18

Cat. No.:	HY-161311
Molecular Formula:	C ₃₀ H ₃₇ N ₃ O ₅ S
Molecular Weight:	551.7
Target:	Cholinesterase (ChE); Cannabinoid Receptor
Pathway:	Neuronal Signaling; GPCR/G Protein
Storage:	Please store the product under the recommended conditions in the Certificate of Analysis.



BIOLOGICAL ACTIVITY

Description	AChE/BChE-IN-18 (Compound 4g) is a dual inhibitor of AChE/BChE, with a IC ₅₀ value of 0.315 μM for AChE. AChE/BChE-IN-18 is also a CB2R antagonist with a K _i value of 31 nM. AChE/BChE-IN-18 has neuroprotective activity ^[1] .	
IC ₅₀ & Target	AChE 0.315 μM (IC ₅₀)	CB2 31 nM (K _i)

REFERENCES

[1]. Mugnaini C, et al. Novel Dual-Acting Hybrids Targeting Type-2 Cannabinoid Receptors and Cholinesterase Activity Show Neuroprotective Effects In Vitro and Amelioration of Cognitive Impairment In Vivo. ACS Chem Neurosci. 2024 Feb 19.

Caution: Product has not been fully validated for medical applications. For research use only.

Tel: 609-228-6898

Fax: 609-228-5909

E-mail: tech@MedChemExpress.com

Address: 1 Deer Park Dr, Suite Q, Monmouth Junction, NJ 08852, USA