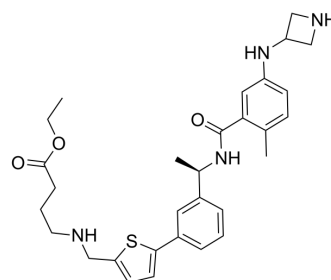


## PLpro-IN-2

Cat. No.:	HY-161365
Molecular Formula:	C <sub>30</sub> H <sub>38</sub> N <sub>4</sub> O <sub>3</sub> S
Molecular Weight:	534.71
Target:	SARS-CoV
Pathway:	Anti-infection
Storage:	Please store the product under the recommended conditions in the Certificate of Analysis.



### BIOLOGICAL ACTIVITY

Description	PLpro-IN-2 (Compound 16) is an inhibitor for SARS-CoV-2 papain-like protease (PLpro), with an IC <sub>50</sub> of 0.25 μM <sup>[1]</sup> .
IC <sub>50</sub> & Target	0.25 μM (PLpro)

### REFERENCES

[1]. Wang X, et al., Chemical Space Profiling of SARS-CoV-2 PLpro Using DNA-Encoded Focused Libraries[J]. ACS Medicinal Chemistry Letters, 2024.

**Caution: Product has not been fully validated for medical applications. For research use only.**

Tel: 609-228-6898

Fax: 609-228-5909

E-mail: tech@MedChemExpress.com

Address: 1 Deer Park Dr, Suite Q, Monmouth Junction, NJ 08852, USA