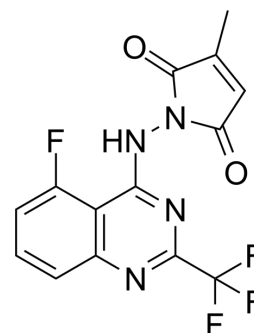


CW2158

Cat. No.:	HY-161392
Molecular Formula:	C ₁₄ H ₈ F ₄ N ₄ O ₂
Molecular Weight:	340.23
Target:	CRM1
Pathway:	Membrane Transporter/Ion Channel
Storage:	Please store the product under the recommended conditions in the Certificate of Analysis.



BIOLOGICAL ACTIVITY

Description	CW2158 (Compound 13) is a modulator for exportin1 (XPO1), which disrupts the chromatin binding, inhibits NFAT transcription factors and activation of T cells ^[1] .	
In Vitro	CW2158 (10 nM-10 μM) inhibits the expression of IL-2 (6 h) and viability (24 h) of Jurkat cells ^[1] . MCE has not independently confirmed the accuracy of these methods. They are for reference only. Cell Viability Assay ^[1]	
	Cell Line:	Jurkat
	Concentration:	10 nM-10 μM
	Incubation Time:	24 h
	Result:	Inhibited cell viability of Jurkats.

REFERENCES

[1]. Chen YF, et al., Targeting the chromatin binding of exportin-1 disrupts NFAT and T cell activation. Nat Chem Biol. 2024 Mar 25.

Caution: Product has not been fully validated for medical applications. For research use only.

Tel: 609-228-6898

Fax: 609-228-5909

E-mail: tech@MedChemExpress.com

Address: 1 Deer Park Dr, Suite Q, Monmouth Junction, NJ 08852, USA