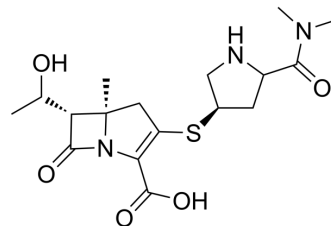


## NA-1-157

|                    |   |
|--------------------|---|
| Cat. No.:          | HY-161397   |
| Molecular Formula: | C <sub>17</sub> H <sub>25</sub> N <sub>3</sub> O <sub>5</sub> S                           |
| Molecular Weight:  | 383.46  |
| Target:            | Bacterial   |
| Pathway:           | Anti-infection  |
| Storage:           | Please store the product under the recommended conditions in the Certificate of Analysis. |



### BIOLOGICAL ACTIVITY

#### Description

NA-1-157 is a potent irreversible covalent inhibitor of the GES-5 carbapenemase, with a MIC of 0.5 µg/mL<sup>[1]</sup>.

### REFERENCES

[1]. Nichole K Stewart, et al. Restricted Rotational Flexibility of the C5 $\alpha$ -Methyl-Substituted Carbapenem NA-1-157 Leads to Potent Inhibition of the GES-5 Carbapenemase. ACS Infect Dis. 2024 Mar 21.

**Caution: Product has not been fully validated for medical applications. For research use only.**

Tel: 609-228-6898

Fax: 609-228-5909

E-mail: tech@MedChemExpress.com

Address: 1 Deer Park Dr, Suite Q, Monmouth Junction, NJ 08852, USA