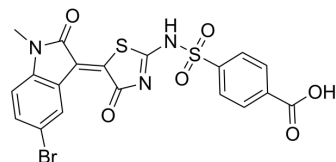


METTL16-IN-1

| | |
|--------------------|---|
| Cat. No.: | HY-161402 |
| Molecular Formula: | C ₁₉ H ₁₂ BrN ₃ O ₆ S ₂ |
| Molecular Weight: | 522.35 |
| Target: | DNA Methyltransferase |
| Pathway: | Epigenetics |
| Storage: | Please store the product under the recommended conditions in the Certificate of Analysis. |



BIOLOGICAL ACTIVITY

Description

METTL16-IN-1 (Compound 45) is a potent METTL16 inhibitor with an IC₅₀ value of 1.7 μM and a K_d value of 1.35 μM^[1].

REFERENCES

[1]. Liu Y, et al. Aminothiazolone Inhibitors Disrupt the Protein-RNA Interaction of METTL16 and Modulate the m6A RNA Modification. *JACS Au*. 2024 Mar 21;4(4):1436-1449.

Caution: Product has not been fully validated for medical applications. For research use only.

Tel: 609-228-6898

Fax: 609-228-5909

E-mail: tech@MedChemExpress.com

Address: 1 Deer Park Dr, Suite Q, Monmouth Junction, NJ 08852, USA