

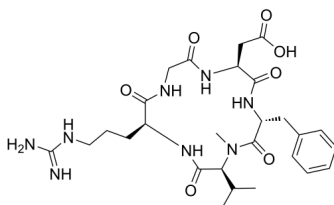
## Cilengitide

Cat. No.: HY-16141  
Batch No.: 114366  
CAS No.: 188968-51-6  
Molecular Formula: C<sub>27</sub>H<sub>40</sub>N<sub>8</sub>O<sub>7</sub>

### ANALYTICAL DATA

Theoretical: C(-), H(-), N(-), Peptide Content(≥60.0%)  
Result: C(49.31%), H(7.03%), N(16.80%), Peptide Content(88.00%)

Chemical Structure:



**Caution: Product has not been fully validated for medical applications. For research use only.**

Tel: 609-228-6898

Fax: 609-228-5909

E-mail: [tech@MedChemExpress.com](mailto:tech@MedChemExpress.com)

Address: 1 Deer Park Dr, Suite F, Monmouth Junction, NJ 08852, USA