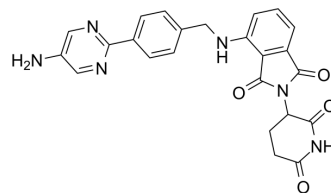


Thalidomide-NHCH₂-Ph-pyrimidine-NH₂

Cat. No.:	HY-161500
Molecular Formula:	C ₂₄ H ₂₀ N ₆ O ₄
Molecular Weight:	456.45
Target:	E3 Ligase Ligand-Linker Conjugates
Pathway:	PROTAC
Storage:	Please store the product under the recommended conditions in the Certificate of Analysis.



BIOLOGICAL ACTIVITY

Description

Thalidomide-NHCH₂-Ph-pyrimidine-NH₂ is a conjugate of E3 ligase ligand and linker, which is consisted of a Thalidomide (HY-14658) and a Linker Boc-NHCH₂-Ph-pyrimidine-NH₂ (HY-161499). Thalidomide-NHCH₂-Ph-pyrimidine-NH₂ is utilized for synthesis of PROTAC molecule XYD198 (HY-161498)^[1].

REFERENCES

[1]. Hu J, et al., Discovery of Highly Potent and Efficient CBP/p300 Degraders with Strong In Vivo Antitumor Activity. *J Med Chem.* 2024 May 9;67(9):6952-6986.

Caution: Product has not been fully validated for medical applications. For research use only.

Tel: 609-228-6898

Fax: 609-228-5909

E-mail: tech@MedChemExpress.com

Address: 1 Deer Park Dr, Suite Q, Monmouth Junction, NJ 08852, USA