

## Degarelix

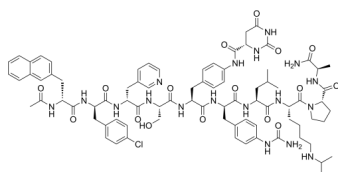
---

Cat. No.: HY-16168A  
Batch No.: 90806  
CAS No.: 214766-78-6  
Molecular Formula: C<sub>82</sub>H<sub>103</sub>ClN<sub>18</sub>O<sub>16</sub>

### ANALYTICAL DATA

Theoretical: C(-), H(-), N(-), Peptide Content(≥60.0%)  
Result: C(56.60%), H(6.29%), N(14.07%), Peptide Content(91.48%)

Chemical Structure:



**Caution: Product has not been fully validated for medical applications. For research use only.**

Tel: 609-228-6898

Fax: 609-228-5909

E-mail: [tech@MedChemExpress.com](mailto:tech@MedChemExpress.com)

Address: 1 Deer Park Dr, Suite Q, Monmouth Junction, NJ 08852, USA