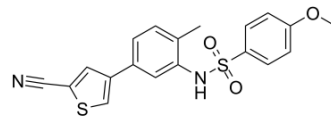


## EL-102

Cat. No.:	HY-16187		
CAS No.:	1233948-61-2		
Molecular Formula:	C <sub>19</sub> H <sub>16</sub> N <sub>2</sub> O <sub>3</sub> S <sub>2</sub>		
Molecular Weight:	384.47		
Target:	HIF/HIF Prolyl-Hydroxylase; Apoptosis		
Pathway:	Metabolic Enzyme/Protease; Apoptosis		
Storage:	Powder	-20°C	3 years
		4°C	2 years
	In solvent	-80°C	6 months
		-20°C	1 month



### SOLVENT & SOLUBILITY

#### In Vitro

DMSO : ≥ 36 mg/mL (93.64 mM)  
 \* "≥" means soluble, but saturation unknown.

Preparing Stock Solutions	Solvent	Mass	1 mg	5 mg	10 mg
	Concentration				
	1 mM		2.6010 mL	13.0049 mL	26.0098 mL
	5 mM		0.5202 mL	2.6010 mL	5.2020 mL
	10 mM		0.2601 mL	1.3005 mL	2.6010 mL

Please refer to the solubility information to select the appropriate solvent.

### BIOLOGICAL ACTIVITY

#### Description

EL102 is a inhibitor of HIF1 $\alpha$ , Which can inhibit tubulin polymerisation and decreased microtubule stability. target: HIF1 $\alpha$ C 50 $\times$ 20-40 nM.[1]in vitro : EL102 is a cytotoxic agent and also displays cytostatic properties, through flow cytometric analysis of PI-stained cells cultured for 24, 48 and 72 h, following treatment. EL102 induces apoptosis and causes G2/M arrest, preventing the cell from entering into mitosis.In vivo: CWR22 tumours were taken from an in vivo passage, cut into small fragments and transplanted subcutaneously (s.c.) into the flank of 48 nude mice. At day 13, when the tumours were palpable, mice were randomised into 10 groups with 8 mice each and treatment initiated. EL102 12 mg kg<sup>-1</sup> via p.o. (0700 hours and 1700 hours daily).[1]

### REFERENCES

[1]. A P Toner et al. The novel toluidine sulphonamide EL102 shows pre-clinical in vitro and in vivo activity against prostate cancer and circumvents MDR1 resistance. Br J Cancer, 2013 Oct 15, 109(8): 2131-2141.

---

**Caution: Product has not been fully validated for medical applications. For research use only.**

Tel: 609-228-6898

Fax: 609-228-5909

E-mail: [tech@MedChemExpress.com](mailto:tech@MedChemExpress.com)

Address: 1 Deer Park Dr, Suite Q, Monmouth Junction, NJ 08852, USA