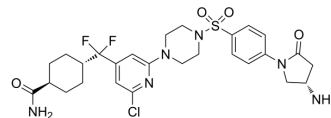


LpxH-IN-2

Cat. No.:	HY-161987
CAS No.:	2923230-41-3
Molecular Formula:	C ₂₇ H ₃₃ ClF ₂ N ₆ O ₄ S
Molecular Weight:	611.1
Target:	Bacterial
Pathway:	Anti-infection
Storage:	Please store the product under the recommended conditions in the Certificate of Analysis.



BIOLOGICAL ACTIVITY

Description	LpxH-IN-2 (compound 014) is a potent LpxH inhibitor. LpxH-IN-2 shows antibacterial activity for <i>E. coli</i> ^[1] .
--------------------	---------------------------------------------------------------------------------------------------------------------------------

REFERENCES

[1]. Benediktsdottir A, et al. Design, synthesis, and in vitro biological evaluation of meta-sulfonamidobenzamide-based antibacterial LpxH inhibitors. *Eur J Med Chem.* 2024 Aug 22;278:116790.

Caution: Product has not been fully validated for medical applications. For research use only.

Tel: 609-228-6898

Fax: 609-228-5909

E-mail: tech@MedChemExpress.com

Address: 1 Deer Park Dr, Suite Q, Monmouth Junction, NJ 08852, USA