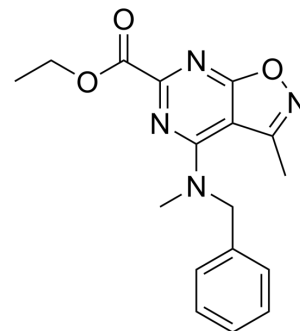


PAT1inh-A0030

Cat. No.:	HY-162033
CAS No.:	1030097-65-4
Molecular Formula:	C ₁₇ H ₁₈ N ₄ O ₃
Molecular Weight:	326.35
Target:	Others
Pathway:	Others
Storage:	Please store the product under the recommended conditions in the Certificate of Analysis.



BIOLOGICAL ACTIVITY

Description	PAT1inh-A0030 is a selective PAT1 (SLC26A6) inhibitor (IC ₅₀ = 1.0 μM). PAT1inh-A0030 inhibits fluid absorption in the ileum of wild-type and cystic fibrosis (CF) mice (Cftrdelf508/delf508) in a closed-loop model of intestinal fluid absorption. PAT1inh-A0030 can be used in the study of intestinal diseases related to CF ^[1] .
IC ₅₀ & Target	PAT1 (SLC26A6) ^[1] .

REFERENCES

[1]. Chu T, et al. Selective isoxazopyrimidine PAT1 (SLC26A6) inhibitors for therapy of intestinal disorders. RSC Med Chem. 2023 Sep 14;14(11):2342-2347.

Caution: Product has not been fully validated for medical applications. For research use only.

Tel: 609-228-6898

Fax: 609-228-5909

E-mail: tech@MedChemExpress.com

Address: 1 Deer Park Dr, Suite Q, Monmouth Junction, NJ 08852, USA