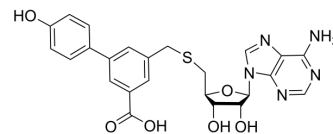


METTL1-WDR4-IN-2

Cat. No.:	HY-162082		
CAS No.:	2919742-07-5		
Molecular Formula:	C ₂₄ H ₂₃ N ₅ O ₆ S		
Molecular Weight:	509.53		
Target:	DNA Methyltransferase		
Pathway:	Epigenetics		
Storage:	Powder	-20°C	3 years
		4°C	2 years
	In solvent	-80°C	6 months
		-20°C	1 month



SOLVENT & SOLUBILITY

In Vitro

DMSO : 100 mg/mL (196.26 mM; Need ultrasonic)

Concentration	Solvent	Mass	Preparing Stock Solutions		
			1 mg	5 mg	10 mg
1 mM			1.9626 mL	9.8130 mL	19.6259 mL
5 mM			0.3925 mL	1.9626 mL	3.9252 mL
10 mM			0.1963 mL	0.9813 mL	1.9626 mL

Please refer to the solubility information to select the appropriate solvent.

In Vivo

- Add each solvent one by one: 10% DMSO >> 40% PEG300 >> 5% Tween-80 >> 45% saline
Solubility: 2.5 mg/mL (4.91 mM); Clear solution; Need ultrasonic
- Add each solvent one by one: 10% DMSO >> 90% (20% SBE-β-CD in saline)
Solubility: 2.5 mg/mL (4.91 mM); Clear solution; Need ultrasonic
- Add each solvent one by one: 10% DMSO >> 90% corn oil
Solubility: 2.5 mg/mL (4.91 mM); Clear solution; Need ultrasonic

BIOLOGICAL ACTIVITY

Description

METTL1-WDR4-IN-2 (compound 6) is a selective methyltransferase Like 1 (METTL1)-WDR4 inhibitor with an IC₅₀ of 41 μM. METTL1-WDR4-IN-2 shows remarkable selectivity against METTL3-14 and slightly selective also against METTL16^[1].

REFERENCES

Caution: Product has not been fully validated for medical applications. For research use only.

Tel: 609-228-6898

Fax: 609-228-5909

E-mail: tech@MedChemExpress.com

Address: 1 Deer Park Dr, Suite Q, Monmouth Junction, NJ 08852, USA