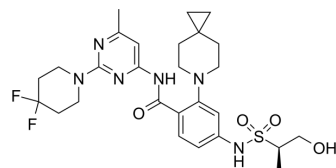


## AM-9022

Cat. No.:	HY-162110
CAS No.:	2446872-46-2
Molecular Formula:	C <sub>27</sub> H <sub>36</sub> F <sub>2</sub> N <sub>6</sub> O <sub>4</sub> S
Molecular Weight:	578.67
Target:	Microtubule/Tubulin
Pathway:	Cell Cycle/DNA Damage; Cytoskeleton
Storage:	Please store the product under the recommended conditions in the Certificate of Analysis.



## BIOLOGICAL ACTIVITY

### Description

AM-9022 is an orally active, potent, selective KIF18A inhibitor that can be used for research on cancer<sup>[1]</sup>.

## REFERENCES

[1]. Payton M, et al. Small-molecule inhibition of kinesin KIF18A reveals a mitotic vulnerability enriched in chromosomally unstable cancers. *Nat Cancer*. 2023 Dec 27.

**Caution: Product has not been fully validated for medical applications. For research use only.**

Tel: 609-228-6898

Fax: 609-228-5909

E-mail: [tech@MedChemExpress.com](mailto:tech@MedChemExpress.com)

Address: 1 Deer Park Dr, Suite Q, Monmouth Junction, NJ 08852, USA