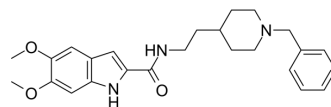


hAChE/hBACE-1-IN-3

Cat. No.:	HY-162127
Molecular Formula:	C ₂₅ H ₃₁ N ₃ O ₃
Molecular Weight:	421.53
Target:	Cholinesterase (ChE); Beta-secretase
Pathway:	Neuronal Signaling
Storage:	Please store the product under the recommended conditions in the Certificate of Analysis.



BIOLOGICAL ACTIVITY

Description	hAChE/hBACE-1-IN-3 (Compound 23a) is a mixed-type inhibitor of hAChE and hBACE-1 with IC ₅₀ values of 0.32 μM and 0.39 μM, respectively, K _i values of 0.26 μM and 0.46 μM, respectively. hAChE/hBACE-1-IN-3 can penetrate the blood-brain barrier ^[1] .
IC ₅₀ & Target	IC ₅₀ : 0.32 μM (hAChE), 0.39 μM (hBACE-1) ^[1]

REFERENCES

[1]. Banoo R, et al. Design, synthesis, and pharmacological evaluation of indole-piperidine amides as Blood-brain barrier permeable dual cholinesterase and β-secretase inhibitors. Eur J Med Chem. 2024 Jan 6;266:116131.

Caution: Product has not been fully validated for medical applications. For research use only.

Tel: 609-228-6898

Fax: 609-228-5909

E-mail: tech@MedChemExpress.com

Address: 1 Deer Park Dr, Suite Q, Monmouth Junction, NJ 08852, USA