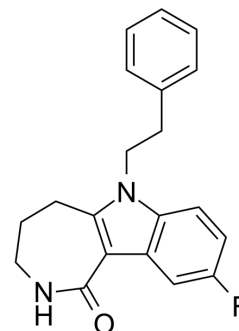


BChE-IN-23

Cat. No.:	HY-162138
CAS No.:	2020357-32-6
Molecular Formula:	C ₂₀ H ₁₉ FN ₂ O
Molecular Weight:	322.38
Target:	Cholinesterase (ChE)
Pathway:	Neuronal Signaling
Storage:	Please store the product under the recommended conditions in the Certificate of Analysis.



BIOLOGICAL ACTIVITY

Description

BChE-IN-23 (compound 2a) is a BChE inhibitor with an IC₅₀ value of 21 nM. BChE-IN-23 can be used in Alzheimer's disease (AD) research^[1].

REFERENCES

[1]. Lee S H, et al. Radiosynthesis and whole-body distribution in mice of a 18F-labeled azepino [4, 3-b] indole-1-one derivative with multimodal activity for the treatment of Alzheimer's disease. *Archiv der Pharmazie*, 2023: e2300491.

Caution: Product has not been fully validated for medical applications. For research use only.

Tel: 609-228-6898

Fax: 609-228-5909

E-mail: tech@MedChemExpress.com

Address: 1 Deer Park Dr, Suite Q, Monmouth Junction, NJ 08852, USA