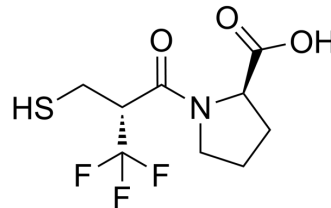


MBL-IN-2

Cat. No.:	HY-162174
Molecular Formula:	C ₉ H ₁₂ F ₃ NO ₃ S
Molecular Weight:	271.26
Target:	Beta-lactamase; Bacterial
Pathway:	Anti-infection
Storage:	Please store the product under the recommended conditions in the Certificate of Analysis.



BIOLOGICAL ACTIVITY

Description	MBL-IN-2 ((2R, 2R')-5αC) is an inhibitor of Metallo-β-lactamase (MBL) that can inhibit New Delhi Metallo-β-lactamase-1 (NDM-1) with an IC ₅₀ of 0.3 μM. MBL-IN-2 ((2R, 2R')-5αC) can be used for the study of resistance to β-lactam antibiotics ^[1] .
IC ₅₀ & Target	IC ₅₀ :0.3 μM (NDM-1) ^[1] .

REFERENCES

[1]. Kondratieva A, et al. Fluorinated captopril analogues inhibit metallo-β-lactamases and facilitate structure determination of NDM-1 binding pose[J]. European Journal of Medicinal Chemistry, 2024: 116140.

Caution: Product has not been fully validated for medical applications. For research use only.

Tel: 609-228-6898

Fax: 609-228-5909

E-mail: tech@MedChemExpress.com

Address: 1 Deer Park Dr, Suite Q, Monmouth Junction, NJ 08852, USA