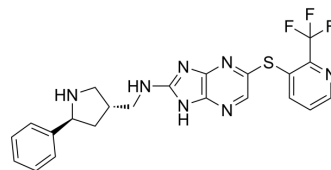


SHP2-IN-25

Cat. No.:	HY-162233
Molecular Formula:	C ₂₂ H ₂₀ F ₃ N ₇ S
Molecular Weight:	472
Target:	Phosphatase; SHP2
Pathway:	Metabolic Enzyme/Protease; Protein Tyrosine Kinase/RTK
Storage:	Please store the product under the recommended conditions in the Certificate of Analysis.



BIOLOGICAL ACTIVITY

Description

SHP2-IN-25 (Compound 6) is a SHP2 allosteric inhibitor, with an IC₅₀ of 225 nM. SHP2-IN-25 can be used for the research of cancer^[1].

REFERENCES

[1]. Ponzi S, et al. Direct-to-biology platform: From synthesis to biological evaluation of SHP2 allosteric inhibitors. *Bioorg Med Chem Lett*. 2024 Mar 1;100:129626.

Caution: Product has not been fully validated for medical applications. For research use only.

Tel: 609-228-6898

Fax: 609-228-5909

E-mail: tech@MedChemExpress.com

Address: 1 Deer Park Dr, Suite Q, Monmouth Junction, NJ 08852, USA