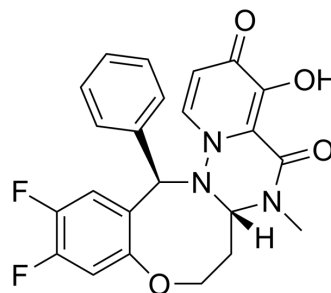


Cap-dependent endonuclease-IN-27

Cat. No.:	HY-162242
Molecular Formula:	C ₂₃ H ₁₉ F ₂ N ₃ O ₄
Molecular Weight:	439.41
Target:	Influenza Virus
Pathway:	Anti-infection
Storage:	Please store the product under the recommended conditions in the Certificate of Analysis.



BIOLOGICAL ACTIVITY

Description

Cap-dependent endonuclease-IN-27 (Compound 8) is an orally active potent cap-dependent endonuclease (CEN) inhibitor. Cap-dependent endonuclease-IN-27, an antiviral agent, shows activity against influenza B virus. Cap-dependent endonuclease-IN-27 has inhibitory activity against IFV A/WSN/33 (H1N1) polymerase (EC₅₀ = 12.26 nM)^[1].

REFERENCES

[1]. Feng J, et al. Discovery of a Macrocyclic Influenza Cap-Dependent Endonuclease Inhibitor. *J Med Chem.* 2024 Feb 22;67(4):2570-2583.

Caution: Product has not been fully validated for medical applications. For research use only.

Tel: 609-228-6898

Fax: 609-228-5909

E-mail: tech@MedChemExpress.com

Address: 1 Deer Park Dr, Suite Q, Monmouth Junction, NJ 08852, USA