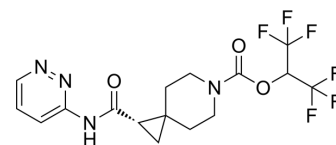


MAGL-IN-15

Cat. No.:	HY-162305
CAS No.:	2770967-08-1
Molecular Formula:	C ₁₆ H ₁₆ F ₆ N ₄ O ₃
Molecular Weight:	426.31
Target:	MAGL
Pathway:	Metabolic Enzyme/Protease
Storage:	Please store the product under the recommended conditions in the Certificate of Analysis.



BIOLOGICAL ACTIVITY

Description

MAGL-IN-15 (Compound 6) is a MAGL inhibitor that can be used in the research of diseases and disorders related to the regulation of endocannabinoid system signaling activities^[1].

REFERENCES

[1]. John J.M. Wiener, et al. Magl inhibitors. U.S. US20240018120A1. 2024-01-18

Caution: Product has not been fully validated for medical applications. For research use only.

Tel: 609-228-6898

Fax: 609-228-5909

E-mail: tech@MedChemExpress.com

Address: 1 Deer Park Dr, Suite Q, Monmouth Junction, NJ 08852, USA