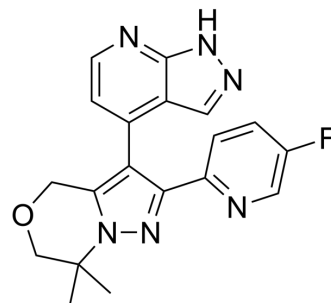


Casein kinase 1δ-IN-15

Cat. No.:	HY-162336
CAS No.:	2765264-27-3
Molecular Formula:	C ₁₉ H ₁₇ FN ₆ O
Molecular Weight:	364.38
Target:	Casein Kinase
Pathway:	Cell Cycle/DNA Damage; Stem Cell/Wnt
Storage:	Please store the product under the recommended conditions in the Certificate of Analysis.



BIOLOGICAL ACTIVITY

Description	Casein kinase 1δ-IN-15 is an inhibitor for casein kinase 1 (CK1δ), with an IC ₅₀ of 0.045 μM ^[1] .
IC ₅₀ & Target	CK1δ 0.045 μM (IC ₅₀)

REFERENCES

[1]. Stefan M.C., et al., Structure-Based Optimization of Selective and Brain Penetrant CK1δ Inhibitors for the Treatment of Circadian Disruptions, ACS Med. Chem. Lett., 2024 March.

Caution: Product has not been fully validated for medical applications. For research use only.

Tel: 609-228-6898

Fax: 609-228-5909

E-mail: tech@MedChemExpress.com

Address: 1 Deer Park Dr, Suite Q, Monmouth Junction, NJ 08852, USA