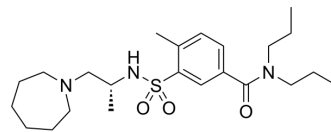


BChE-IN-30

| | |
|--------------------|---|
| Cat. No.: | HY-162339 |
| Molecular Formula: | C ₂₃ H ₃₉ N ₃ O ₃ S |
| Molecular Weight: | 437.64 |
| Target: | Cholinesterase (ChE) |
| Pathway: | Neuronal Signaling |
| Storage: | Please store the product under the recommended conditions in the Certificate of Analysis. |



BIOLOGICAL ACTIVITY

Description

BChE-IN-30 (compound (R)-37a) is a BChE inhibitor (IC₅₀: 5 nM) with anti-inflammatory activity and low toxicity. BChE-IN-30 can improve cognitive deficits induced by scopolamine and Aβ1-42 peptide and can be used in the study of late-stage AD^[1].

REFERENCES

[1]. Lu X, et al. Discovery, Structure-Based Modification, In Vitro, In Vivo, and In Silico Exploration of m-Sulfamoyl Benzoamide Derivatives as Selective Butyrylcholinesterase Inhibitors for Treating Alzheimer's Disease. ACS Chem Neurosci. 2024 Mar 7.

Caution: Product has not been fully validated for medical applications. For research use only.

Tel: 609-228-6898

Fax: 609-228-5909

E-mail: tech@MedChemExpress.com

Address: 1 Deer Park Dr, Suite Q, Monmouth Junction, NJ 08852, USA