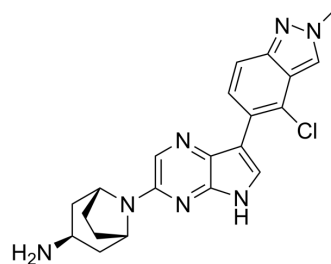


SHP2-IN-27

Cat. No.:	HY-162355
CAS No.:	2376012-00-7
Molecular Formula:	C ₂₁ H ₂₂ ClN ₇
Molecular Weight:	407.9
Target:	SHP2
Pathway:	Protein Tyrosine Kinase/RTK
Storage:	Please store the product under the recommended conditions in the Certificate of Analysis.



BIOLOGICAL ACTIVITY

Description

SHP2-IN-27 (compound 28) is an allosteric inhibitor of tyrosine phosphatase SH2^[1].

REFERENCES

[1]. Day JEH, et al. Fragment-Based Discovery of Allosteric Inhibitors of SH2 Domain-Containing Protein Tyrosine Phosphatase-2 (SHP2). J Med Chem. 2024 Mar 10.

Caution: Product has not been fully validated for medical applications. For research use only.

Tel: 609-228-6898

Fax: 609-228-5909

E-mail: tech@MedChemExpress.com

Address: 1 Deer Park Dr, Suite Q, Monmouth Junction, NJ 08852, USA