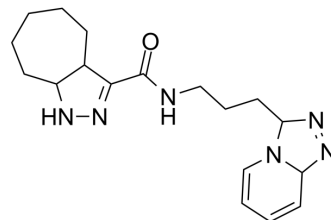


## KRAS G12D inhibitor 20

Cat. No.:	HY-162366
Molecular Formula:	C <sub>18</sub> H <sub>26</sub> N <sub>6</sub> O
Molecular Weight:	342.44
Target:	Ras
Pathway:	GPCR/G Protein; MAPK/ERK Pathway
Storage:	Please store the product under the recommended conditions in the Certificate of Analysis.



### BIOLOGICAL ACTIVITY

<b>Description</b>	KRAS G12D inhibitor 20 (Compound 14) is a selective G12D KRAS inhibitor. KRAS G12D inhibitor 20 has antitumor activity <sup>[1]</sup> .
<b>IC<sub>50</sub> &amp; Target</b>	KRas G12D
<b>In Vitro</b>	KRAS G12D inhibitor 20 (72 h) shows antiproliferative activity against PANC-1 (KRAS G12D) and BxPC3 (KRASwt) human pancreatic cancer cell lines, with IC <sub>50</sub> s of 5.5 and 8.2 μM, and is low toxic for normal cells <sup>[1]</sup> . MCE has not independently confirmed the accuracy of these methods. They are for reference only.
<b>In Vivo</b>	KRAS G12D inhibitor 20 (6 mg/kg, i.p., 6 injections) has no significant change in body weight in healthy BALB/c female mice <sup>[1]</sup> . KRAS G12D inhibitor 20 (6 mg/kg, i.p.) reduces tumor volume by 13.1% in xenograft mouse models using immunodeficient SCID male mice bearing KRASG12D (PANC-1) <sup>[1]</sup> . MCE has not independently confirmed the accuracy of these methods. They are for reference only.

### REFERENCES

[1]. Randelović I, et al. Gluing GAP to RAS Mutants: A New Approach to an Old Problem in Cancer Drug Development. Int J Mol Sci. 2024 Feb 22;25(5):2572.

**Caution: Product has not been fully validated for medical applications. For research use only.**

Tel: 609-228-6898

Fax: 609-228-5909

E-mail: tech@MedChemExpress.com

Address: 1 Deer Park Dr, Suite Q, Monmouth Junction, NJ 08852, USA