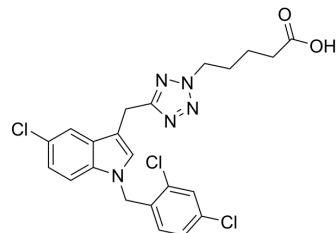


## cPLA<sub>2</sub>α-IN-2

Cat. No.:	HY-162368
Molecular Formula:	C <sub>22</sub> H <sub>20</sub> Cl <sub>3</sub> N <sub>5</sub> O <sub>2</sub>
Molecular Weight:	492.79
Target:	Phospholipase
Pathway:	Metabolic Enzyme/Protease
Storage:	Please store the product under the recommended conditions in the Certificate of Analysis.



## BIOLOGICAL ACTIVITY

### Description

cPLA<sub>2</sub>α-IN-2 (Compound 122) is an inhibitor of cytosolic phospholipase A<sub>2</sub>α (cPLA<sub>2</sub>α)<sup>[1]</sup>.

## REFERENCES

[1]. Meyer Zu Vilsendorf I, et al. 1-Benzylindoles as inhibitors of cytosolic phospholipase A<sub>2</sub>α: synthesis, biological activity, aqueous solubility, and cell permeability. RSC Med Chem. 2023;15(2):641-659. Published 2023 Dec 13.

**Caution: Product has not been fully validated for medical applications. For research use only.**

Tel: 609-228-6898

Fax: 609-228-5909

E-mail: tech@MedChemExpress.com

Address: 1 Deer Park Dr, Suite Q, Monmouth Junction, NJ 08852, USA