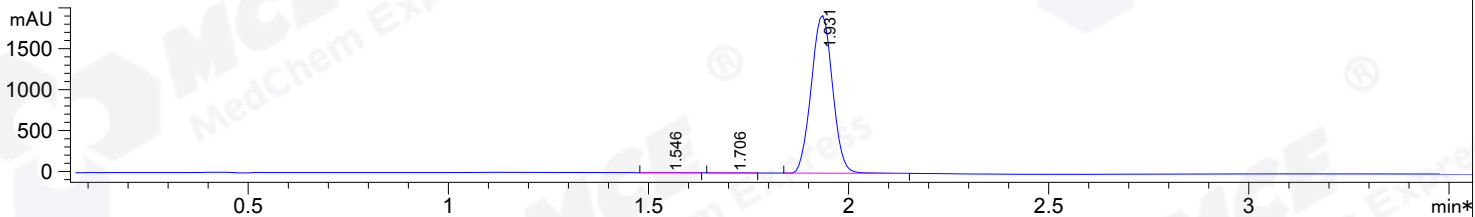


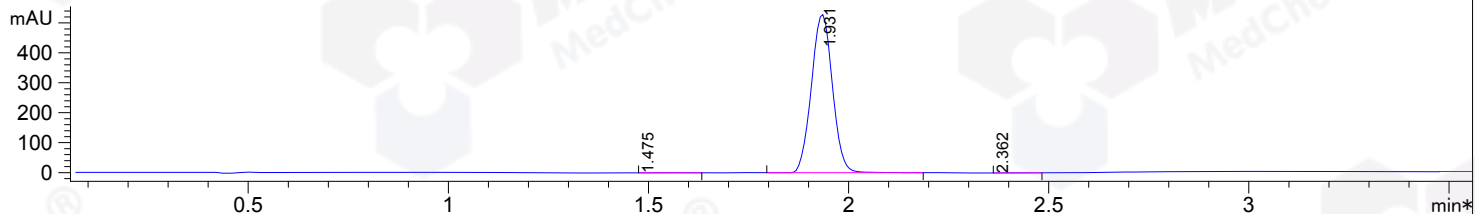
File ..60617 2016-06-17 09-40-36\BIZ2016-617-WJ6.D Tgt Mass (CHM) :

Injection Date : 17 Jun 16 1:44 pm +0800 Seq. Line : 54  
 Sample Name : BIZ2016-617-WJ6 Location : P1-D-05  
 Acq. Operator : Su Xiao Ying(LCMS-02) Inj : 1  
 Spec. Reported : MS Integration Inj Volume : 3 ul  
 Acq. Method : D:\Aglient 1260\Data\20160617\20160617 2016-06-17 09-40-36\100-1000MS+3MIN-  
 Analysis Method : D:\AGLIENT 1260\DATA\20160617\20160617 2016-06-17 09-40-36\100-1000MS+3MIN-  
 Catalog No : HY-16265 Batch#20732 A-RP-153  
 Method Info : HY-365\_5H01RS,M,A-RP-108, 210nm,23min

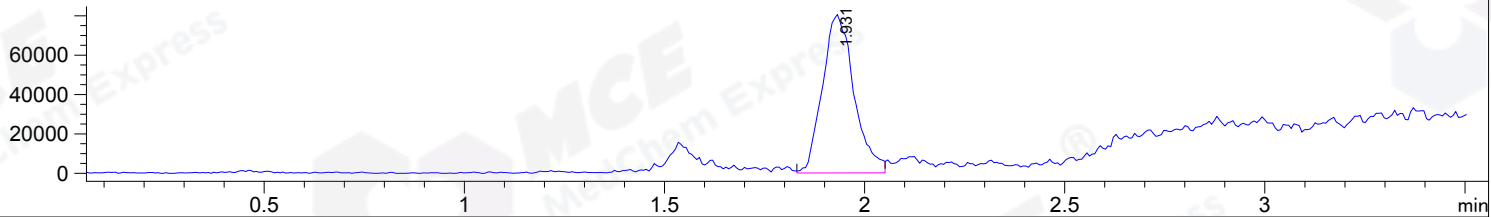
\*DAD1 B, Sig=214,4 Ref=off



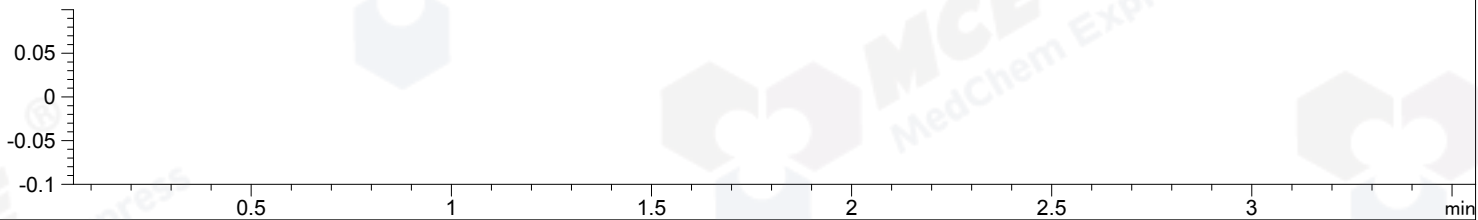
\*DAD1 C, Sig=254,4 Ref=off



MSD1 TIC, MS File ES-API, Pos, Scan, Frag: 50



Ion 1, MSD1 1, Target Mass 0 +H Positive, EIC=0.7:1.7



Integration Results for DAD1 B, Sig=214,4 Ref=off

RetTim	Width	Area	Height	Area%
1.55	0.08	11.37	2.49	0.16
1.71	0.08	4.67	1.01	0.07
1.93	0.06	7119.59	1937.24	99.78

Integration Results for DAD1 C, Sig=254,4 Ref=off

RetTim	Width	Area	Height	Area%
1.48	0.07	2.23	-0.02	0.12
1.93	0.06	1932.37	531.35	99.73
2.36	0.06	3.01	0.00	0.16

Ret. Time: 1.93 &lt;&lt;&lt;&lt; POSITIVE SPECTRA &gt;&gt;&gt;&gt;

