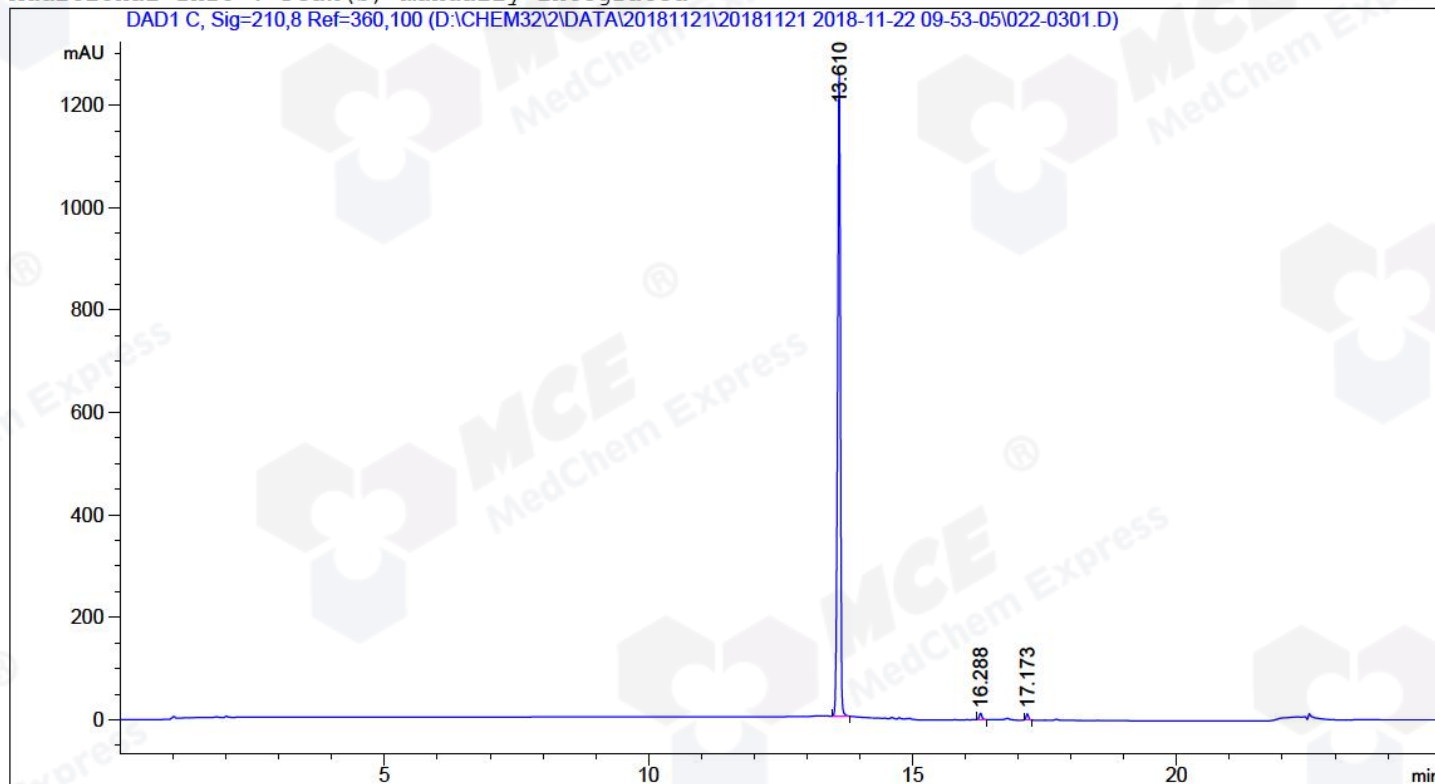


=====

Acq. Operator	: ZDX	Seq. Line	: 3
Acq. Instrument	: HPLC-12	Location	: Vial 22
Injection Date	: 2018-11-22 10:23:07	Inj	: 1
		Inj Volume	: 5.0 µl
Different Inj Volume from Sequence !		Actual Inj Volume	: 3.0 µl
Acq. Method	: D:\CHEM32\2\DATA\20181121\20181121 2018-11-22 09-53-05\HY-16268-H01P02 (RP-HPLC).M		
Last changed	: 2018-11-21 02:28:53 by ZDX		
Analysis Method	: D:\CHEM32\2\DATA\20181121\20181121 2018-11-21 14-29-16\HY-16268-H01P02 (RP-HPLC).M		
Last changed	: 2018-11-22 11:17:20 by ZDX (modified after loading)		
Catalog No	: HY-16268 Batch#13149 A-RP-301		

Additional Info : Peak(s) manually integrated



=====
Area Percent Report
=====

Sorted By : Signal
Multiplier: : 1.0000
Dilution: : 1.0000
Use Multiplier & Dilution Factor with ISTDs

Signal 1: DAD1 C, Sig=210,8 Ref=360,100

Peak #	RetTime [min]	Type	Width [min]	Area [mAU*s]	Height [mAU]	Area %
1	13.610	MM	0.0614	4628.02979	1257.08740	98.3391
2	16.288	MM	0.0545	40.56112	12.40451	0.8619
3	17.173	MM	0.0525	37.60222	11.94431	0.7990

Totals : 4706.19313 1281.43622

*** End of Report ***