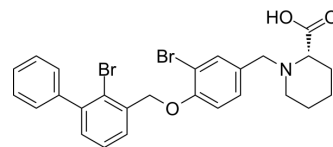


## PD-1/PD-L1-IN-36

Cat. No.:	HY-163041
CAS No.:	2714327-65-6
Molecular Formula:	C <sub>26</sub> H <sub>25</sub> Br <sub>2</sub> NO <sub>3</sub>
Molecular Weight:	559.29
Target:	PD-1/PD-L1
Pathway:	Immunology/Inflammation
Storage:	Please store the product under the recommended conditions in the Certificate of Analysis.



## BIOLOGICAL ACTIVITY

### Description

PD-1/PD-L1-IN-36 (Compound 2k) is a PD-1/PD-L1 complex inhibitor (IC<sub>50</sub>: 15 nM). PD-1/PD-L1-IN-36 can be used for research of cancer immunotherapy<sup>[1]</sup>.

## REFERENCES

[1]. Konieczny M, et al. Di-bromo-Based Small-Molecule Inhibitors of the PD-1/PD-L1 Immune Checkpoint. J Med Chem. 2020 Oct 8;63(19):11271-11285.

**Caution: Product has not been fully validated for medical applications. For research use only.**

Tel: 609-228-6898

Fax: 609-228-5909

E-mail: tech@MedChemExpress.com

Address: 1 Deer Park Dr, Suite Q, Monmouth Junction, NJ 08852, USA